



## User Manual



12200 Thatcher Court, Poway, CA 92064  
TEL 858-486-8787 FAX 858-486-8789

[ONLINEJDS@AOL.COM](mailto:ONLINEJDS@AOL.COM)  
[www.jdstechologies.com](http://www.jdstechologies.com)

## Introduction

Welcome to HomeRunner User Interface Software. With HomeRunner, you can create any number of control “screens” using image files (jpg, gif, bmp, etc.) for “backgrounds” and control “buttons.” If you have no image files yet, you can simply select a color for each screen background and choose from the included button images in the HomeRunner “Buttons” folder.

If you plan to use photos or other image files for backgrounds, copy them to your HomeRunner “Backgrounds” folder (C:\Stargate\HomeRunner\Backgrounds). It is best to use photos with the same resolution as the pc touch screen or monitor (e.g. 1024 x 768). Higher resolution images will work but may take longer to load when switching screens (depending on the speed of the computer). If you plan to use icons or other image files for button images, copy them to your HomeRunner “Buttons” folder (C:\Stargate\HomeRunner\Buttons). Buttons can also be transparent to allow the background image to show through and be used as a control surface. Buttons will reduce in size slightly when clicked or touched, giving the appearance of a button being pressed.

You can change the background and button images at any time. Once you have created your control screens, you save them all as a “layout” in the HomeRunner “Layouts” folder (C:\Stargate\HomeRunner\Layouts). When you launch HomeRunner, it will recall the last layout that was running. You can define any of the screens as the “default screen” which will be the first screen to appear.

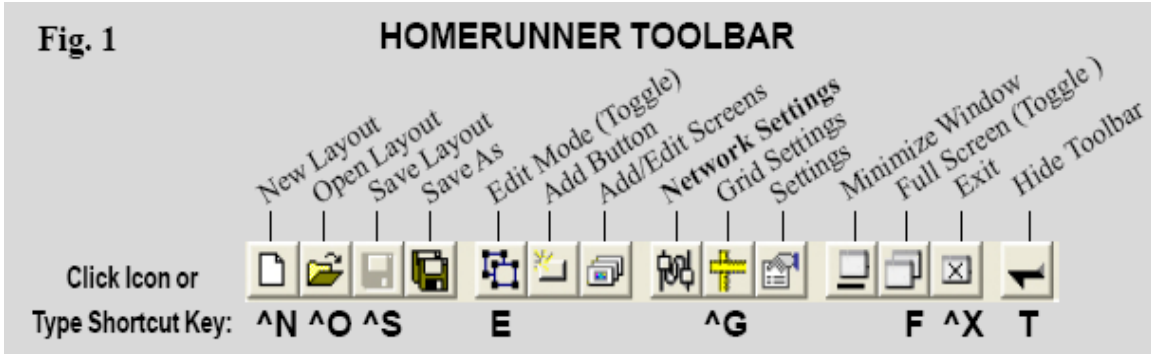
## Initial Set Up and Configuration

HomeRunner is created using Microsoft .NET and should operate on any platform that supports the full .NET Framework (Windows PC: Windows 98 and newer).

The following steps will guide you through downloading, installing and initial configuration of HomeRunner.

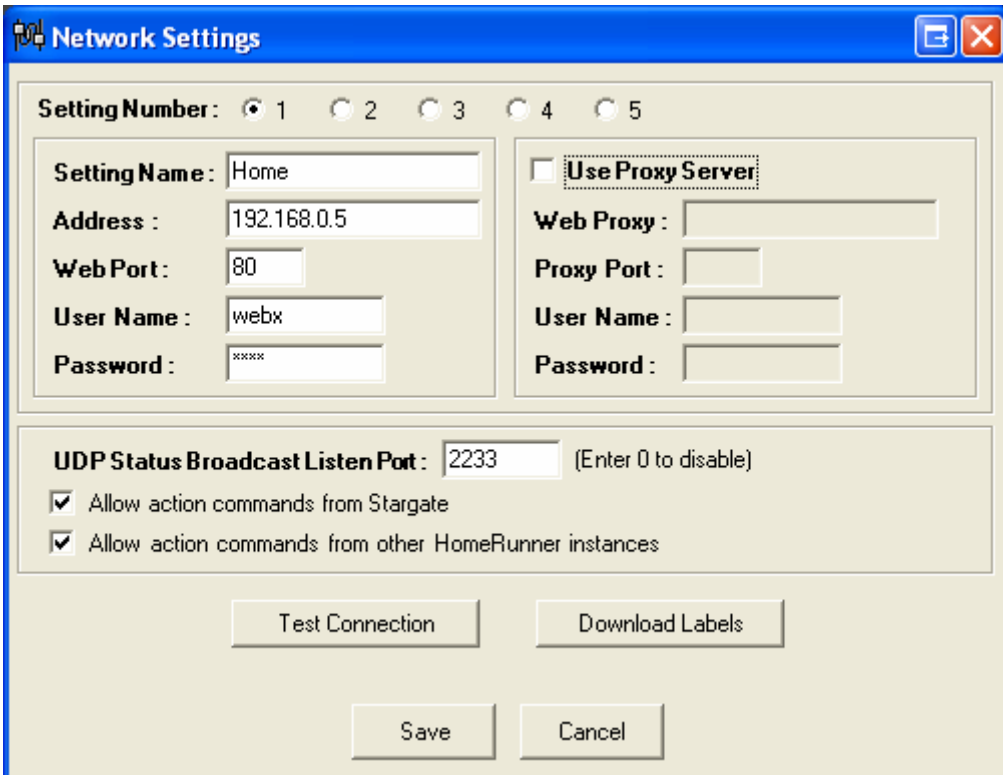
1. Download the HomeRunner installer from <http://www.WebXpander.net/>
2. Unzip the downloaded file and run HomeRunnerSetup.exe
3. Install the program into the default folder (C:\Stargate\HomeRunner) or you may select a different folder if you prefer
4. Double-click the HomeRunner icon on your desktop or select it from the Start Menu to start HomeRunner
5. The first thing you will need to configure is the address of your Web Xpander
6. Click the **Network Settings** icon on the HomeRunner toolbar located at the bottom of the screen (see Fig. 1)
7. Select Setting Number 1, enter a Setting Name (i.e. Home), and enter your Web Xpander IP Address (default = 192.168.0.5), Web port (default = 80), and User Name / Password (default = webx / webx)
8. Click "Test Connection" to confirm that you have entered the correct information and to verify a successful connection

9. Click "Download Labels" to transfer all of your device names from the Web Xpander to HomeRunner
10. From WinEVM, open Megacontroller, click "Logging Messages" and make sure all relevant boxes are checked



## Network Settings

The Network Settings screen is accessed through the HomeRunner toolbar. If the HomeRunner toolbar is not visible, press "T" to toggle between hidden and visible.



Network Settings

HomeRunner can store up to 5 different network settings which can be selected either through the Network Settings screen or from actions assigned to user created buttons. Each setting can be given an optional name (i.e. Home, Office) and must contain the IP

address of the Web Xpander, the web port (typically port 80) and the User Name and Password for the Web Xpander. If you are accessing your Web Xpander from behind a proxy server, check the "Use Proxy Server" box and enter the appropriate proxy server information.

HomeRunner uses standard HTTP requests (the same way a web browser is used to access the Web Xpander) to perform most functions and any settings required for your web browser to connect to the Web Xpander would need to be specified here as well.

As well as periodic polling of Stargate to determine current device status, HomeRunner has a feature called UDP Status Updates which allows almost instant notification and display of device status changes. For example, you can create a button with separate "On" and "Off" images for a lamp and you will see the image change from Off to On almost immediately if the status of the lamp changes.

The UDP Status Updates are broadcast on a user configurable port # (default is 2233) and the "listen" port on HomeRunner must match the "send" port specified in the Web Xpander settings screen.

As well as reporting instant device changes, other commands can be received via UDP by HomeRunner. Any function you can assign to a button can be executed remotely by either Stargate or another HomeRunner instance. The two checkboxes at the bottom of the screen enable that functionality. Details of how to remotely execute commands are specified in a later section.

## **Edit Mode**

HomeRunner operates in one of two modes, Edit Mode and Run Mode. Edit Mode allows you to add and edit screens and buttons, while Run Mode is used to test and execute your design. Toggling between Edit and Run mode is performed by pressing the "E" key on your keyboard, clicking the "Edit Mode" button on the toolbar, or by Right-Clicking on the background of the current screen. Edit mode is indicated by a dotted outline around each button.

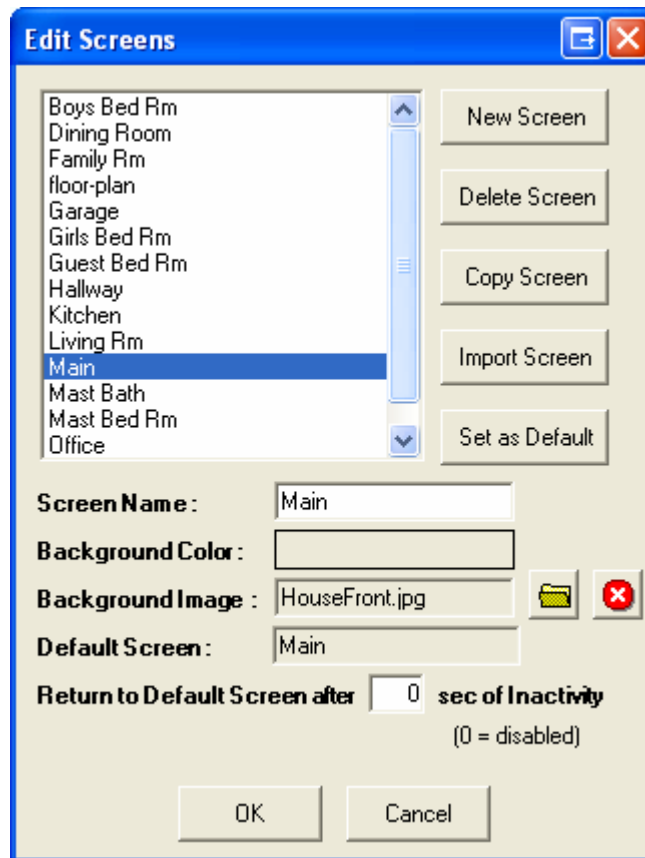
## **Layouts**

A Layout refers to a set of screens and buttons, much like a schedule in Stargate consists of a collection of events stored together in a file. Layouts in HomeRunner are stored in the \Layouts folder and can be selected by clicking the "Open Layout" icon in the toolbar or pressing Ctrl-O.

A new, empty, layout is created by clicking the "New Layout" icon in the toolbar or pressing Ctrl-N. The current layout can be saved by clicking the "Save Layout" icon on the toolbar (Ctrl-S) or saved with a new name by clicking the "Save As" icon.

## Screens

A screen refers to a single page or screen within a layout that holds one or more buttons. Click the "Add/Edit Screens" icon in the toolbar or right-click twice on the background and select "Add/Edit Screens" to open the Edit Screens window.



Edit Screens

The screens in the current layout will be displayed with the current screen highlighted. To view and edit the properties of a screen, select it from the list. After you select a screen, the screen's name, background color and background image will be displayed.

To change the name of the screen, click in the Screen Name box and make any changes.

To change the background color (visible only if you do not choose an image background), click in the Background Color box and a color selection dialog will be displayed.

To select a background image, click the folder button to display a list of files in the \Backgrounds folder. You can select an image from any folder accessible to your computer which will then be copied into the \Backgrounds folder. It is best to use photos

scaled to match the resolution of the pc touch screen or monitor that you will be using (i.e. 1024x768) since photos will be scaled to fit the screen. To remove a background image, click the X button.

One screen can be set as the Default Screen by clicking the "Set as Default" button. This screen will be the first screen displayed when HomeRunner started and if the "Return to Default Screen after" feature is used will determine which screen gets displayed after the specified period of inactivity.

The "New Screen" button will create a new screen with a default name of "(New Screen)". The Screen Name text box will be highlighted to allow immediate renaming of this screen.

The "Delete Screen" button will delete the highlighted screen.

The "Copy Screen" button will copy the highlighted screen and will name the new screen with "(Copy)" at the end of the name. As with the New Screen function, the Screen Name text box will be highlighted to allow the immediate renaming of the new copy.

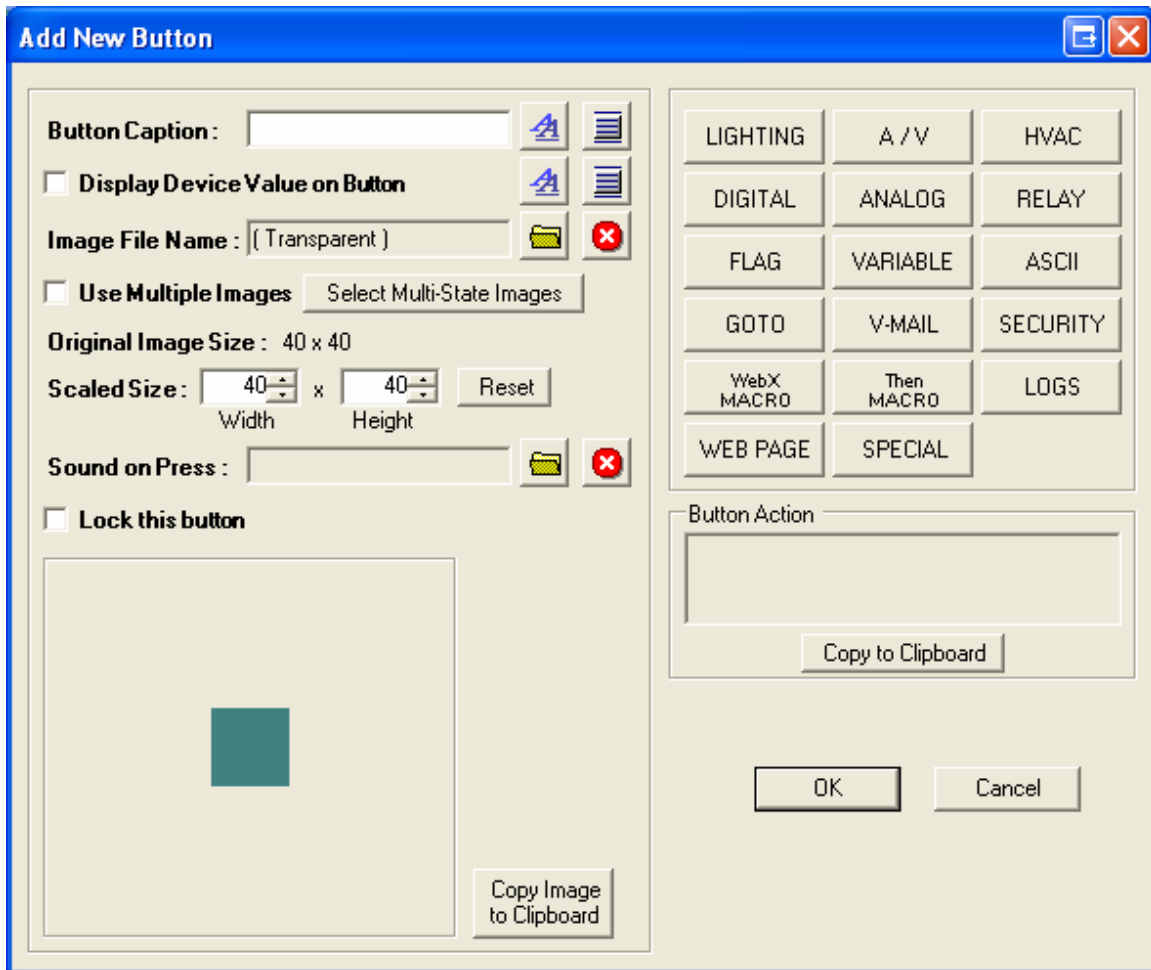
The "Import Screen" button allows you to import a full screen from a *different* layout. Clicking this button will display a list of existing layouts followed by a listing of the selected layout's screens.

## Buttons

Buttons are control surfaces created on the screen. Buttons can be a visible graphical element (.jpeg, .gif, .bmp) or can be transparent "control spots" placed strategically over objects in the background image.

For the ultimate in home control convenience, use a floor plan as the background for your main screen, and photos of each room and area of your home as backgrounds for your control screens. Place transparent "control spots" over each device in the photos you want to control. Add graphic control buttons to access frequently used functions such as lighting scenes, security, A/V, thermostat, etc. (Button images can be selected from the built-in library, downloaded from the internet or created from scratch.)

To create a button, click the "Add Button" button on the toolbar. If you are not already in Edit mode, clicking this button will switch to Edit mode. You can also right-click on the background of the screen and select "New Button" to insert a new button.



Add New Button

The Button Caption is optional text that can be displayed along with a button. Type the text you want to appear with the button in the Button Caption field. Next to the Button Caption field you can select the font (including font name, size and color) for the caption. The font size specified will be used when HomeRunner is running full screen. When the window is scaled, the font size will be scaled proportionately. The button next to the Font selection button allows you to specify the vertical location of the button caption (Above, Inside Top, Inside Middle, Inside Bottom, or Below).

If applicable for the specified device type, checking the "Display Device Value on Button" box will display the device value with the button. This is especially useful for variable values but can also display On/Off values. The font and vertical alignment can also be specified for the device value.

To select an "Image File Name" to be used as a graphic for the button, click the folder button to list the images in the "\\Buttons" folder. You can select an image from any folder accessible to your computer which will then be copied into the \\Buttons folder.

The original image size (the native resolution of the selected image) is shown along with the scaled, or displayed, image size. The size can be set manually by typing numbers in the width and height boxes or the button can be dynamically sized on the screen (after you click OK) by clicking and dragging with the mouse.

A default sound that will play on all button presses can be configured in the "Settings" screen. The "Sound on Press" field specifies a sound specific to the current button and will override the default sound.

Clicking "Lock this button" will prompt you for a numeric password on a keypad. When the button is pressed in Run Mode, the user will be prompted for the password before the button function is executed.

The "Copy Image to Clipboard" function is used for transparent buttons and will copy the section of the background image under the transparent button. This feature is useful for creating an alternate image to indicate on/off states in an external photo editor (i.e. PhotoShop, Paint, etc.) Modify the copied image as desired, then Save As a different name to your "Buttons" folder. Then select the new button image as one of the multistate button images.

Each of the 17 function buttons on the right half of the Edit Button screen selects and indicates the action(s) that will be taken when the button is pressed. Most are self-explanatory but each function is explained in detail in a later section.

The "Button Action" field on the right side displays the command or action that is stored within the button and is executed by HomeRunner when the button is pressed. The same action can be initiated externally from either a separate HomeRunner instance or from Stargate. The Button Action is shown here and can be copied to the clipboard to make it easier to create the command on the external system. More details of remotely executing actions is described in a later section.

Click OK to accept all changes and return to the current screen. Click Cancel to discard any changes made to the current button.

## **Advanced Editing**

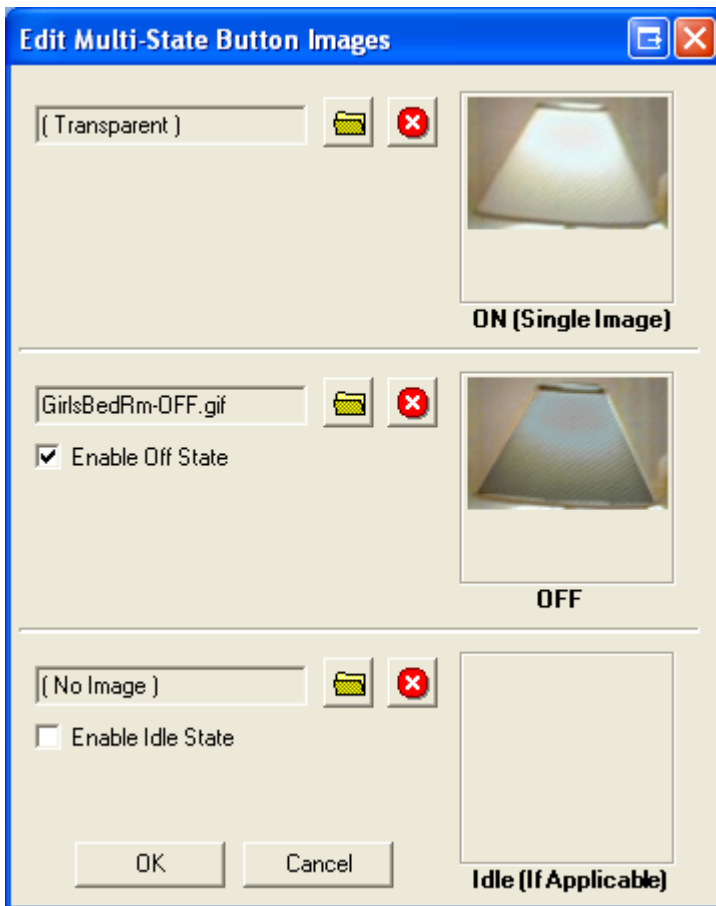
Button positions can be adjusted in fine (1 pixel) increments using the arrow keys while in Edit Mode. Holding down an arrow key will continue to move the button until released. For coarse adjustments, holding the CTRL key will cause each press of an arrow key to move the selected button 5 pixels.

Multiple buttons can be edited simultaneously for changing font characteristics, button size, etc. First select the various buttons to be edited. This can be done by holding down the CTRL key and clicking each button or by dragging the mouse over the desired buttons (the dotted line bordering the selected buttons will move). Then right click one of the selected buttons and click "edit" to access the Multi-Edit field. The title bar of the



Multi-Edit field will indicate the number of buttons selected. Any changes made will affect all selected buttons.

Different button images can be used to indicate the on, off and idle (if applicable) states of a controlled device. Animated gifs can also be used. To assign the different images, check the “Use Multiple Images” box in the Edit Button field (or click the “Select Multi-State Images” button). Then select the desired button image for the on, off and idle (if applicable) states.



Transparent button images can also be copied to the clipboard and edited in a graphics program (Photoshop, Paint, etc.) to create alternate images to indicate on/off states. First select the button in Edit Mode, then click the “Copy Image to Clipboard” button in the Edit Button field. Next, open your graphics program, click File - New and paste the clipboard image. Modify the pasted image as desired, then Save As a different name to your “Buttons” folder. Then select the new button image as one of the multi-state button images. The image shown above is a lamp shade that is part of a background image defined as a transparent button. The photo was taken with the lamp on. The transparent button image was then copied to the clipboard, edited to appear off by decreasing brightness and contrast, then saved as “GirlsBedRm-OFF.gif” in the Buttons folder and selected for the OFF state image.